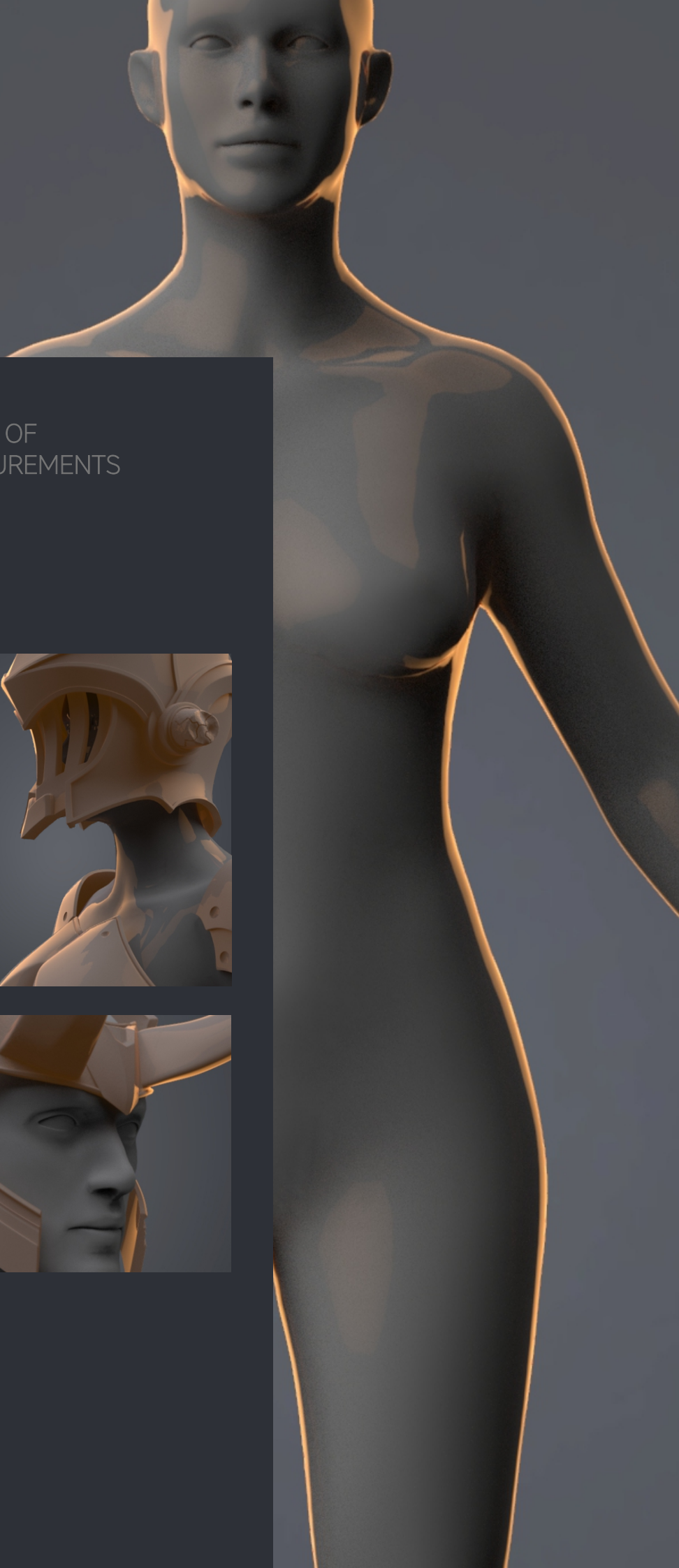
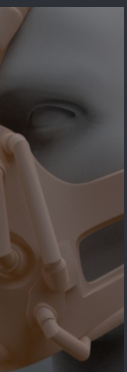




INFORMATION SHEET OF BODY & HEAD MEASUREMENTS

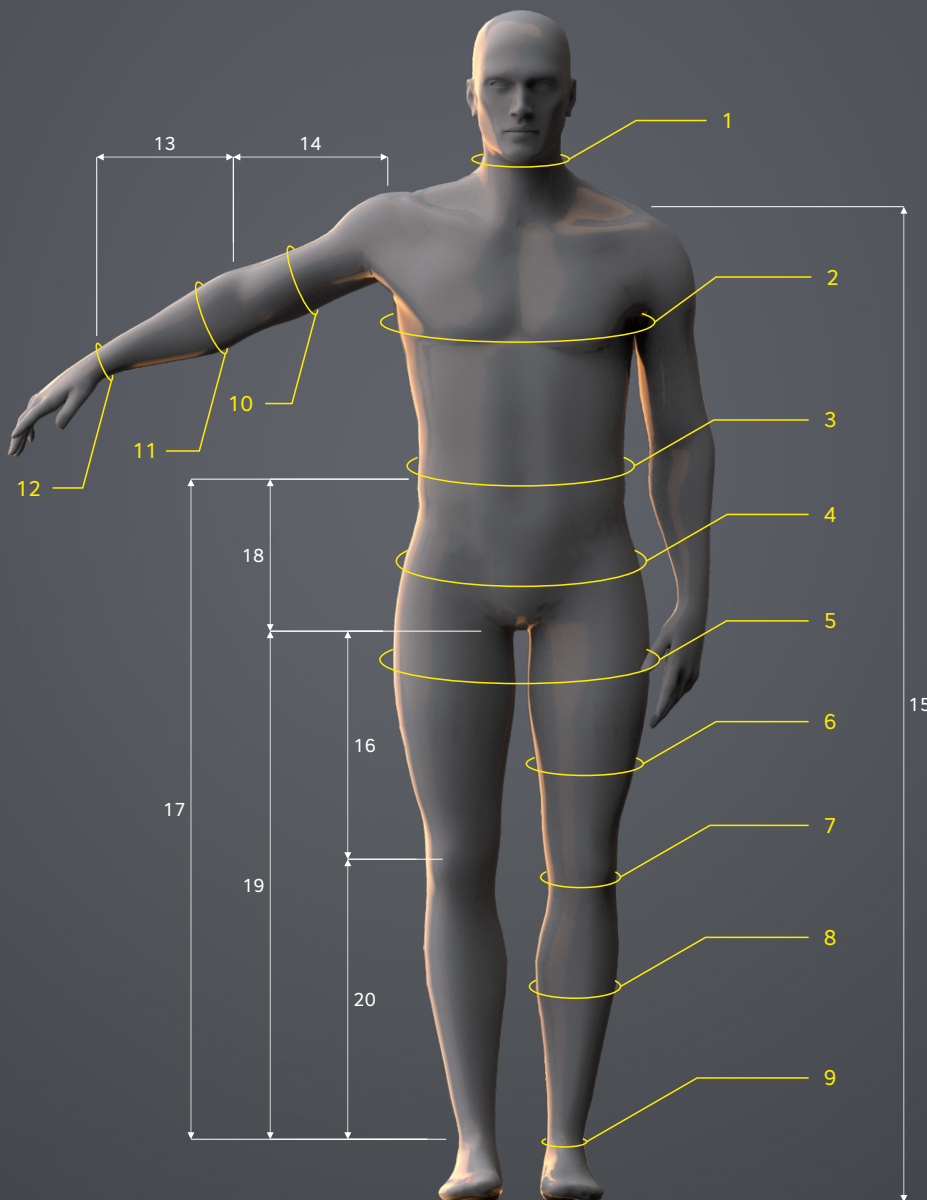
3Demon

www.3d-mon.com



01 MALE BODY MEASUREMENTS

- The following images annotate the standard male body we use for our 3D models.
- The body dimensions are based on an average male body
- The following annotations are displayed in centimetres as well as in inches.
- The following annotations are numbered, referring to the measurement chart, for easy readability, the **length annotations are displayed in white** and **circumferences are displayed in yellow**
- The purpose of this sheet is to help you determine whether you need to scale the models before printing
- We recommend using measuring tape or you can also download and print our measuring tool for free **link**

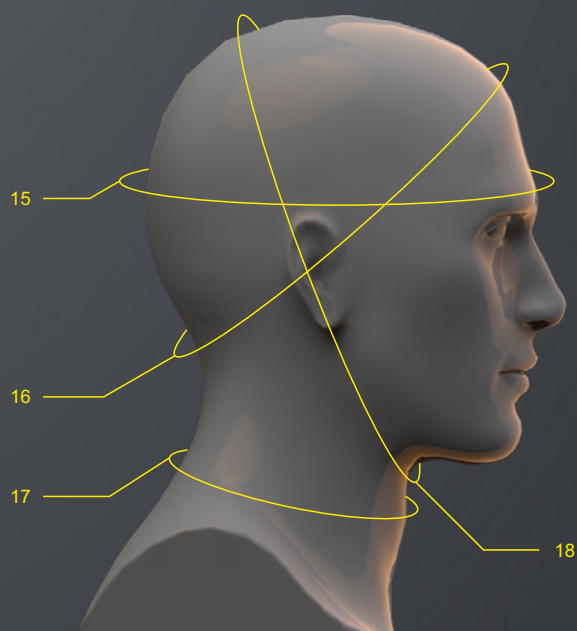
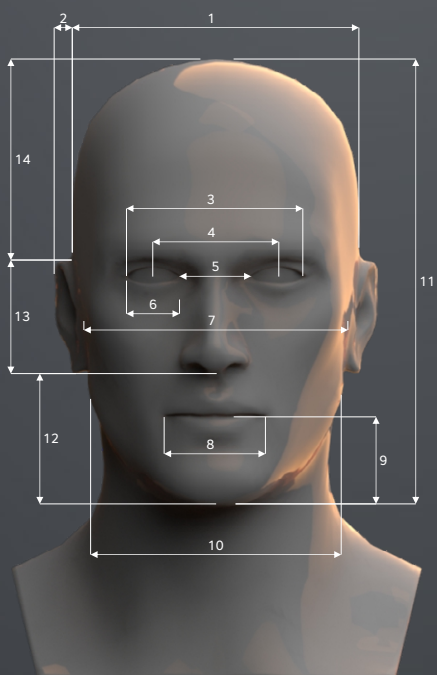
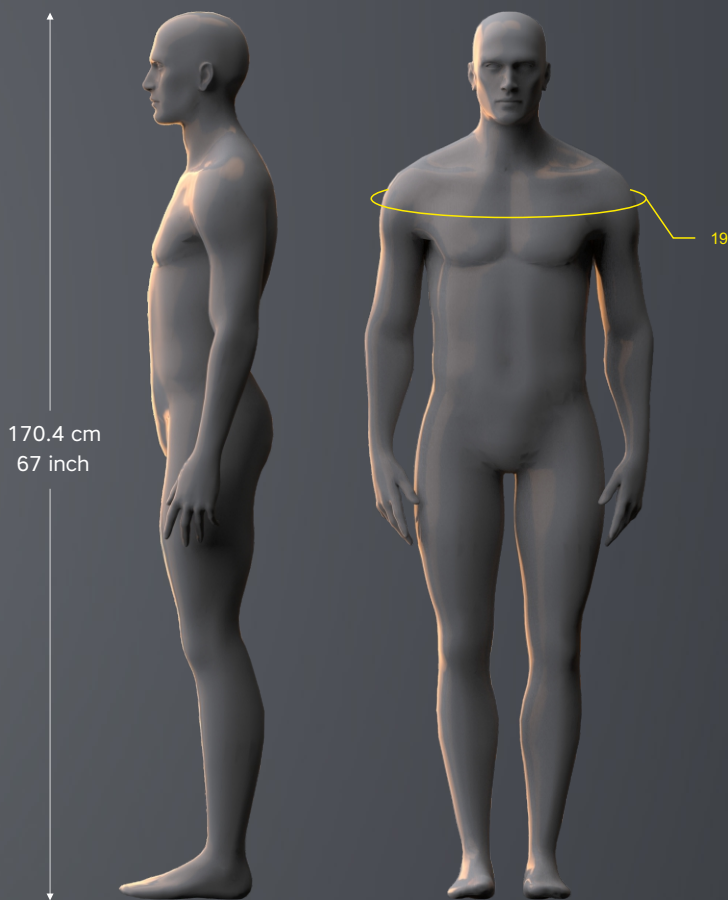


MEASUREMENT CHART

	inch	cm
1	14.9	38.0
2	40.2	102.3
3	31.5	80.2
4	38.5	97.9
5	41.5	105.4
6	21.7	55.2
7	13.9	35.5
8	15.1	38.4
9	8.4	21.3
10	12.0	30.6
11	11.4	29.1
12	6.3	16.2
13	8.8	22.4
14	10.4	26.5
15	57.9	147.1
16	13.5	34.5
17	37.3	94.8
18	8.1	20.7
19	29.7	75.6
20	17.0	43.2

02 MALE BODY MEASUREMENTS

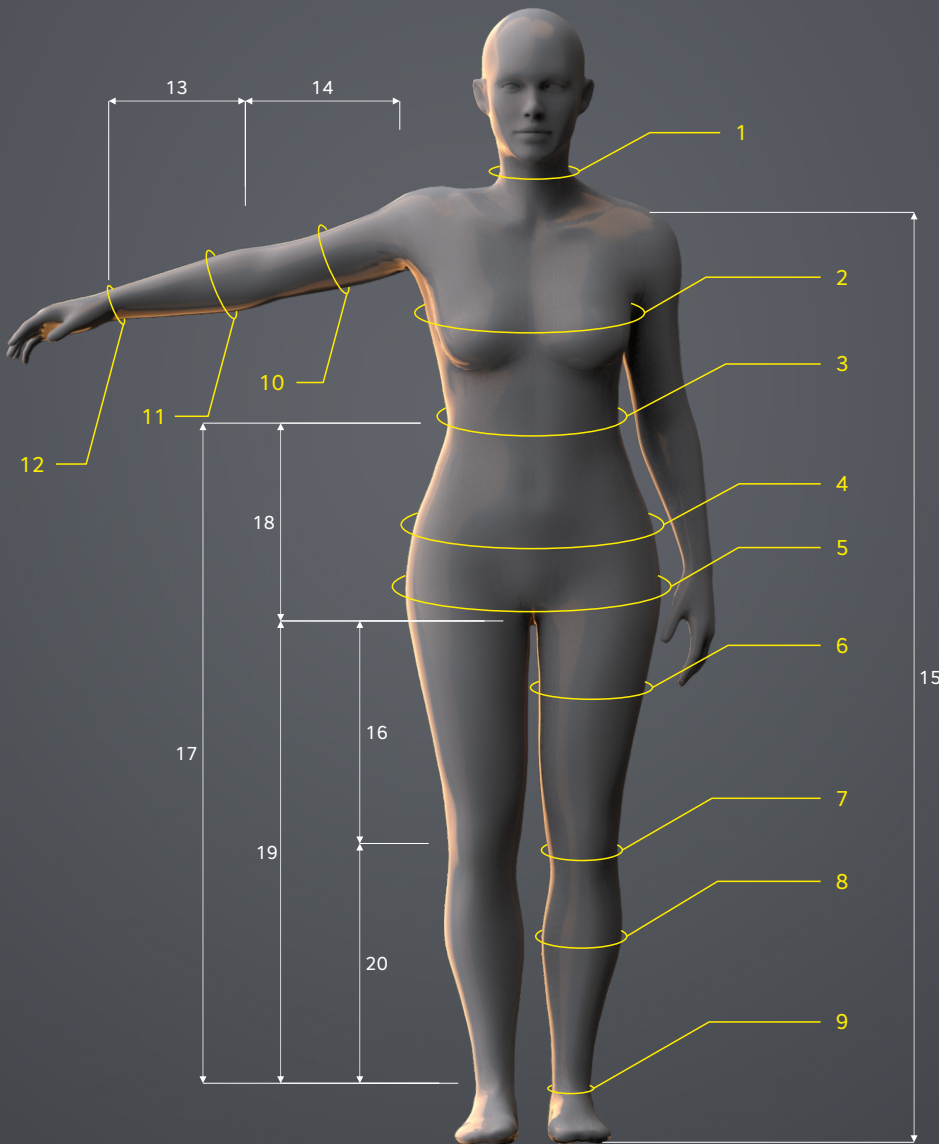
	inch	cm
1	5.6	14.2
2	0.3	0.8
3	3.5	9.0
4	2.5	6.3
5	1.4	3.5
6	1.1	2.7
7	5.3	13.4
8	19.6	49.9
9	17.1	43.5
10	4.1	10.5
11	8.9	22.6
12	26.4	67.0
13	22.3	56.6
14	38.9	98.8
15	21.7	55.1
16	22.8	57.8
17	15.0	38.0
18	24.8	62.9
19	46.2	117.4



03 FEMALE BODY MEASUREMENTS

- The following images annotate the standard female body we use for our 3D models.
- The body dimensions are based on an average female body.
- The following annotations are displayed in centimetres as well as in inches.
- The following annotations are numbered, referring to the measurement chart, for easy readability, the **length annotations are displayed in white** and **circumferences are displayed in yellow**

- The purpose of this sheet is to help you determine whether you need to scale the models before printing
- We recommend using measuring tape or you can also download and print our measuring tool for free **link**

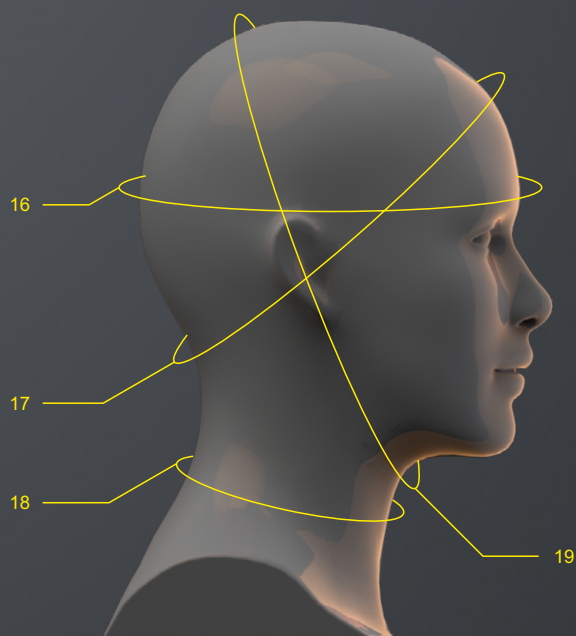
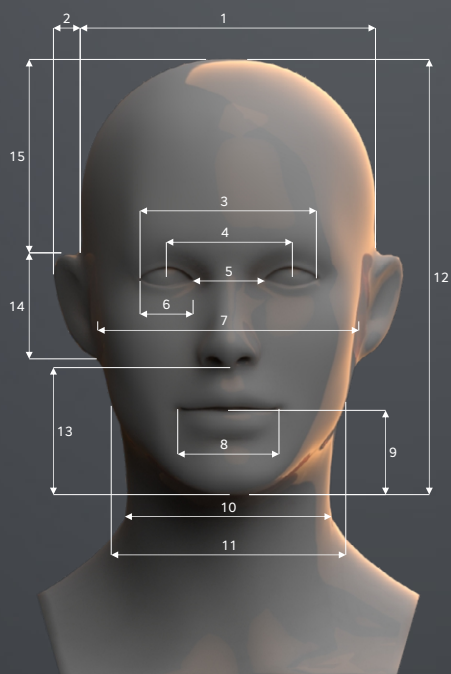
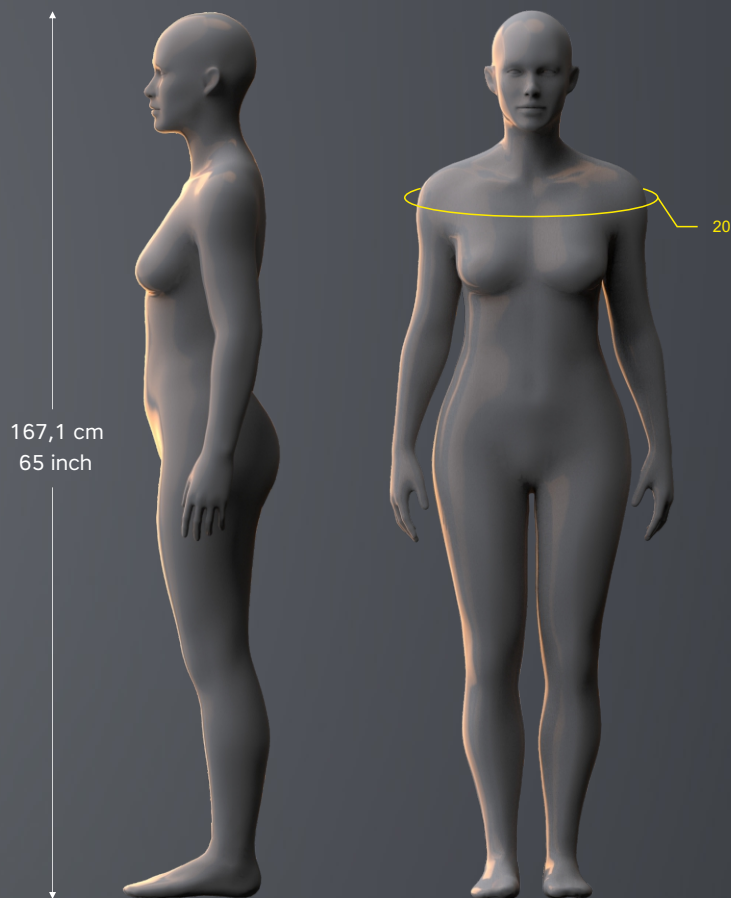


MEASUREMENT CHART

	inch	cm
1	13,0	33,1
2	38,0	96,6
3	29,2	74,1
4	38,3	97,4
5	40,8	103,7
6	21,7	55,1
7	13,9	35,4
8	14,9	37,9
9	9,8	24,8
10	11,5	29,3
11	10,6	26,9
12	6,5	16,4
13	8,9	22,6
14	10,9	27,6
15	53,6	136,2
16	12,4	31,5
17	38,7	98,3
18	11,9	30,1
19	27,0	68,6
20	14,4	36,5

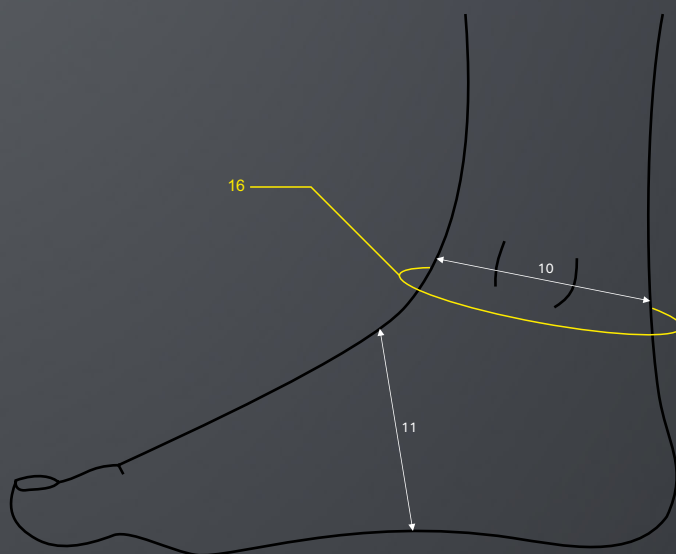
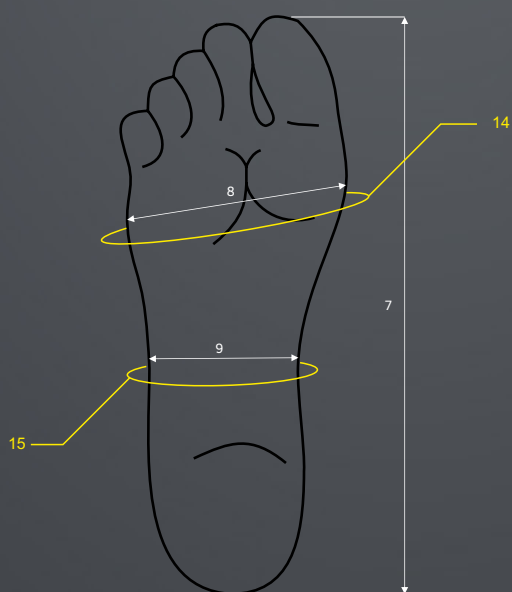
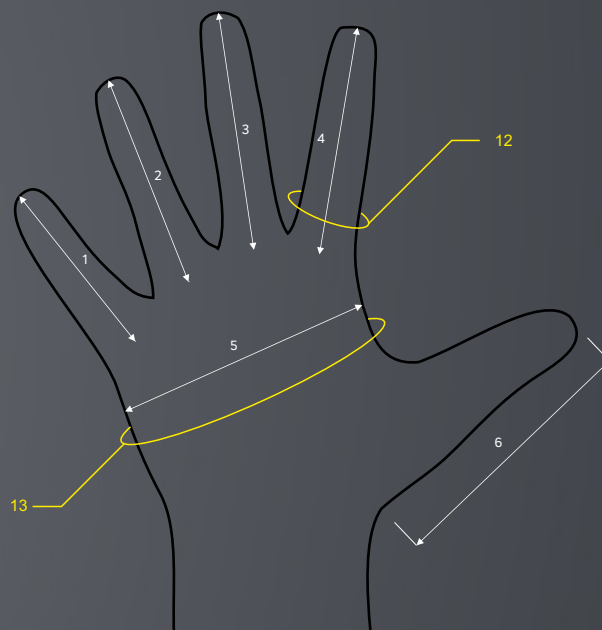
04 FEMALE BODY MEASUREMENTS

	inch	cm
1	5,8	14,8
2	0,5	1,2
3	3,6	9,1
4	2,5	6,4
5	1,4	3,6
6	1,1	2,7
7	5,1	12,9
8	1,9	4,9
9	1,6	4,1
10	4,0	10,2
11	4,6	11,8
12	8,8	22,4
13	2,5	6,3
14	21,0	53,3
15	4,0	10,1
16	21,6	54,8
17	22,7	57,7
18	13,0	33,1
19	24,8	62,9
20	38,9	98,8



05 HAND & FOOT MEASUREMENTS

	inch	cm
1	3,3	8,5
2	3,7	9,3
3	3,2	8,2
4	2,7	6,9
5	3,1	8,0
6	4,3	10,9
7	10,1	25,7
8	3,6	9,2
9	2,8	7,0
10	3,7	9,4
11	3,2	8,1
12	2,3	5,9
13	7,9	20
14	9,0	22,9
15	8,6	21,8
16	10,0	25,3



06 TESTING CORRECT SCALE



TIP: test-print only a part of the model

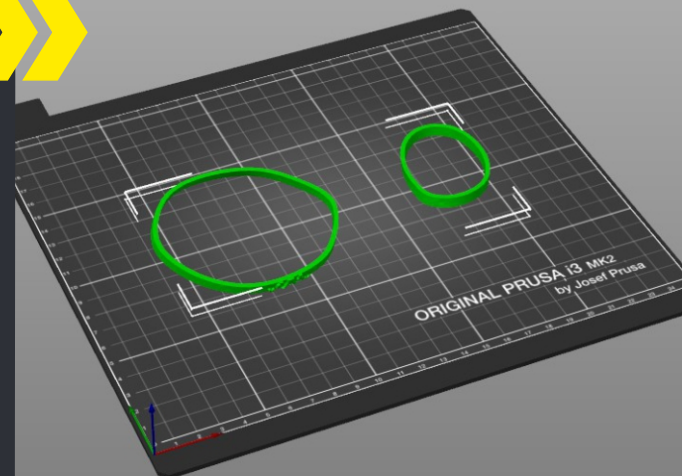
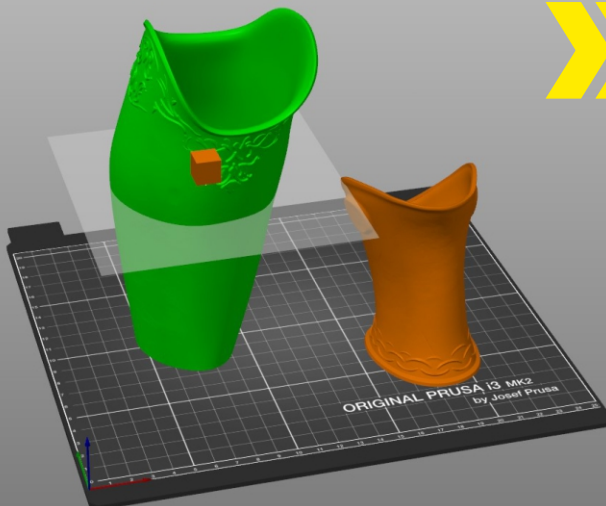
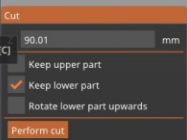
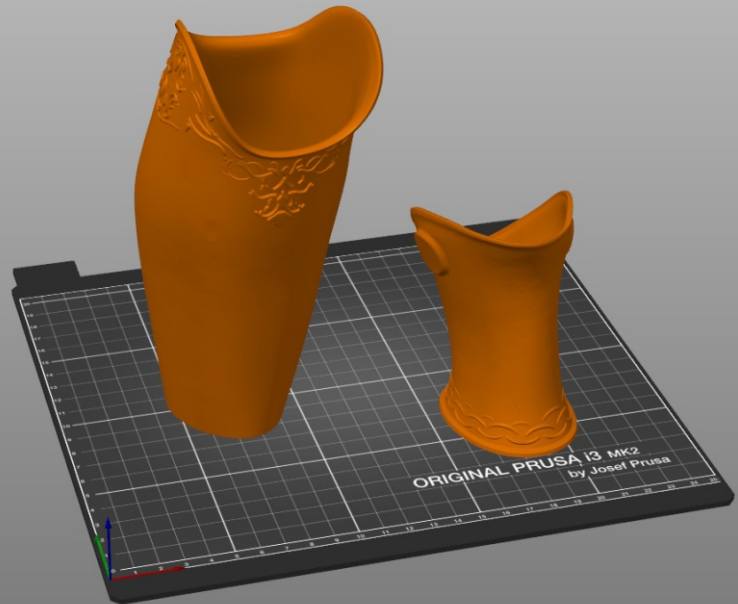
- Since the measurements might not be absolutely accurate every time, we recommend printing only a part of the model.
- Cutting the models and testing them will save you time and material.
- Print the tightest part to see if it fits.

Should you need any help or advice, feel free to contact us on our facebook, instagram, discord or Email.

CUTTING PARTS IN PRUSA SLICER

Malenia's Leg Armor

by 3Demon



07 HOW TO SCALE A MODEL?



In case you have never scaled a model before, here are some tips.

- We recommend using 3D Builder or Prusa Slicer but you can use any program at your disposal.
- Open the program and import the model.
- Make sure you locked the scale to avoid deformation.
- Don't forget to save the changes.

Should you need any help or advice, feel free to contact us on our facebook, instagram, discord or Email.

SCALING USING MESHMIXER OR PRUSA SLICER

